

**STUDIES, TRAINING &  
RESEARCH OPPORTUNITIES  
ABROAD.**

**To Master & PhD students**

webinar

**DATE: 19 MAY 2022**

**TIME: 15:00 – 16:45**

**PLACE: ZOOM**

## I Part

1. *ERASMUS+ Programme. Student Exchange*
2. Exchange under Bilateral Agreements
3. NORDTEK. Opportunities for All
4. BALTECH. Short Mobilities
5. Other Exchange Possibilities
6. DAAD. Short- and Long-Term Research in Germany

## II Part

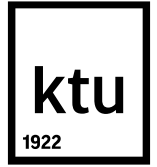
7. *BAFF. Internship & Research Opportunities*
8. *DBU. Fellowships for University Graduates from Central and Eastern Europe*

# *ERASMUS+ Programme. Student Exchange*



Rūta Jankauskienė  
Exchange programme coordinators  
Academic Mobility Office

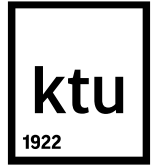
# *ERASMUS+ Programme*



- The biggest educational exchange programme in the world
- Since 1987
- It creates a European Higher Education Area and fosters innovation throughout Europe

- **Erasmus+ Programme Countries** (EU & N.Macedonia, Iceland, Lichtenstein, Norway, Turkey, Serbia)
- **Erasmus+ Associate Countries** (Armenia, Azerbaijan, Brasil, Georgia, India, Israel, Japan, Kazakhstan, Mexico, Peru, Ukraine, S. Korea, S. Africa, USA...)

# Types of Exchange

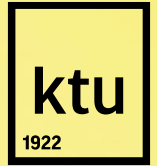


Exchange has to be compatible with the MA, PhD degree-related programme and personal development needs.

Students may carry out either one or a combination of the activities described below:

- ❑ **Study period abroad** at a partner higher education institution (HEI).
- ❑ **Combination of studies and traineeship:** either one activity after the other or both at the same time.
- ❑ **Traineeship (work placement) abroad** in an university, enterprise or any other relevant workplace. This activity covers opportunities for students and recent graduates.

# Forms of Exchange



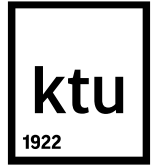
Study and Traineeship activities can be either **physical** or **blended**.

**Physical exchange** = on site in the host country.

**Blended exchange** combines a period of online studies/ traineeship with a period of physical stay in the host country.

For the **physical part** of blended exchange, a minimum duration of **2 months** apply.

# *Duration of Exchange*

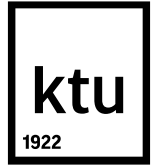


The same student may participate in **physical** mobility periods **up to 12 months maximum per each cycle of study**, independently of the number and type of mobility activities.

- **Long-term exchange:** from 2 to 12 months;
- **Short-term exchange:** from 5 to 30 days (physical) (only for PhDs);
- Short-term physical exchange as part of blended exchange (MA students);

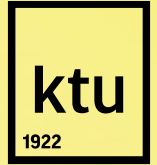


# *Student Exchange for Studies*



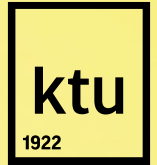
1. KTU must have inter-institutional agreements with the receiving partner universities before the mobility for studies takes place. Check the [list of partner universities](#).
2. Following courses at a partner institution;
3. Recognition of learning outcomes/credits.

# *Student Exchange for Traineeships*



1. Students have to find a traineeship place by themselves;
2. Traineeships can be completed:
  - **During studies** (mandatory or voluntary);
  - **After studies** (within 12 months after graduation (also Post-doc traineeship));
3. Recognition of learning outcomes/ credits for during-studies traineeship for MAs (**not for PhDs**)

# Funding Options



Exchange Type	Scholarship, EUR/month
Studies in Programme Countries	450-520
Studies in Associate Countries	700+ travel grant
Traineeship	600-700
Combination of studies and traineeship	450-520
Short-term exchange (5-30 days)	70 EUR per day* 50 EUR per day** ***

\* Up to the 14th day of activity

\*\* 15th to the 30th day of activity

\*\*\* Green travelling

- ✓ Students can get any **regular grant** for the exchange period.
- ✓ Grant is allocated only for the physical part of the **blended** exchange.
- ✓ In addition to the Erasmus+ **traineeship** grant students can receive a contribution from the traineeship organisation.
- ✓ Students with **fewer opportunities** can receive additional support.

Students cannot receive a grant during the period of **virtual** activities in their country of residence.

# Advantages of Exchange

- ERASMUS+ studies and/or traineeship\* is a fully recognised part of your diploma/degree.
- Studies at KTU are not terminated.
- Additional support is available:
  - for students with fewer opportunities/special needs
  - for green travel
- Scholarships/ payments from KTU remain.
- No age limit.

\*additional conditions for PhD students.

# *Application and Selection*



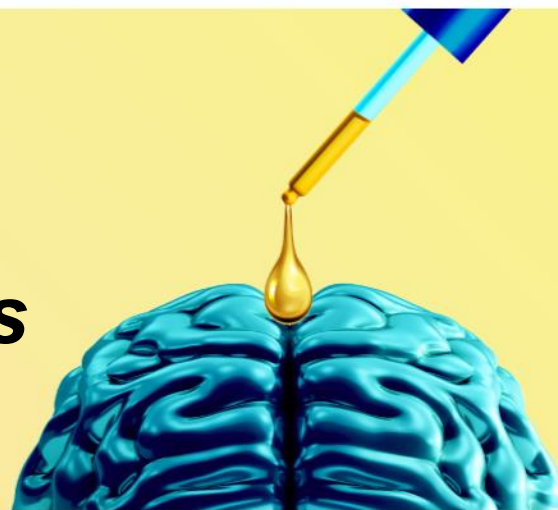
## Application:

- Submitted at [Dream Apply](#) or [Mobility Online](#)
- **Deadline:** by **10th day** of every month

## Selection:

- **Every month** (except July, August and December).
- Grants are allocated by the PhD selection committee under the requirements set in the Order for the selection of PhD students.

***More information:***  
***<https://en.ktu.edu/erasmus>***



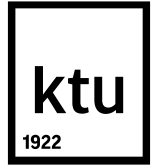


<b>Need more help?</b>
<a href="mailto:erasmus@ktu.lt">erasmus@ktu.lt</a>
STUDENTS INFO CENTRE (Studentų g. 50)
<a href="http://ktu.edu/erasmus">ktu.edu/erasmus</a>

# *Exchange Studies under Bilateral Agreements*



# Study outside Europe



Exchange studies for one semester

---

## **Bilateral Exchange Studies**

## **Institutions**

## **KTU Mobility Grant**

Canada, Mexico,  
Malaysia, Indonesia,  
South Korea, China,  
Taiwan, Hong Kong,  
etc.

Check the [list of  
partner universities](#)

700 EUR/month +  
travel grant



# ***NORDTEK Network***



A network of **30 technical universities in the Nordic and Baltic countries** -- provide a world class research and education in many fields.

## **Main focus areas:**

- Engineering Education (content and pedagogy)
- Entrepreneurship and Innovation
- Student Mobility

# Mobility within NORDTEK network

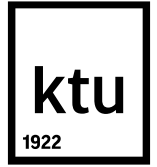
## Countries

Denmark, Estonia, Finland, Iceland, Latvia, Norway, Sweden.

## Who can participate?

- Students (\*PhDs only ERASMUS partners)
- Academic staff

# Mobility Information



## For students

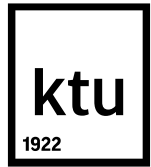
- 1-2 semesters within NORDTEK university (studies, partner visits)
- Summer schools

## For academic staff

- Exchange visits (teaching, tutoring, development of teaching materials, partner visits, etc.)

**Only physical exchange!**

# NORDTEK PhD Courses



## Search for PhD courses in the NORDTEK Cooperation

Type search word, to look up matching courses

*E.g. Math*



[Show advanced search options](#)

### Upcoming courses

- Timber Engineering D
- Traffic Management D
- Numerical Methods in Geotechnics D
- Rock Construction D
- Programming Parallel Computers D

### Sign up for the NORDTEK newsletter

*Email address*

**SIGN UP**

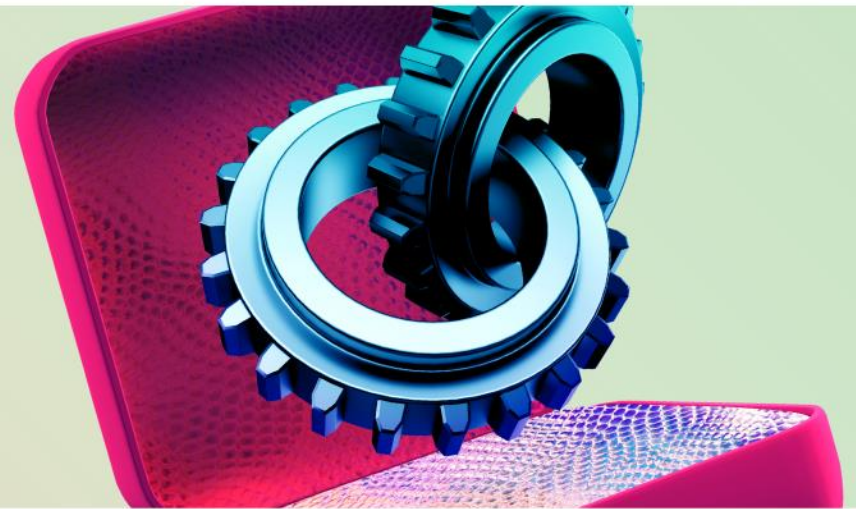
Sign-up for the newsletter to receive information about new courses, conferences and seminars as well as other relevant information for PhD students.





***More information:*** <http://nordtek.net/>

***NORDTEK Network***

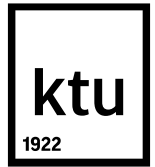


***Contact person:*** [ruta.jankauskiene@ktu.lt](mailto:ruta.jankauskiene@ktu.lt)



# BALTECH. Short-term Mobilities





Baltic Sea Region University Consortium for Science and Technology



—  —  
Riga Technical University

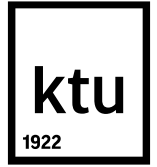
—  —  
Tallinn University of Technology



—  —  
Kaunas University of Technology

—  —  
Vilnius Gediminas Technical University

# Mobility



- **Countries:** Estonia, Latvia and Lithuania;
- **Short-term** (up to 14 days) mobilities;
- **Mobility activities:** training, summer school, studies, research activity, conferences, cooperation visits, symposiums, etc;
- **Grant** can cover expenses of travelling, accommodation, participation fees, etc.



***More information:*** [\*https://www.baltech.info/\*](https://www.baltech.info/)

## **BALTECH. Short Mobilities**

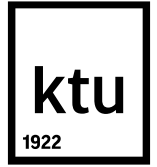


***Contact person at KTU:*** [\*ruta.jankauskiene@ktu.lt\*](mailto:ruta.jankauskiene@ktu.lt)

## *Other Exchange Opportunities*



# *Other Exchange Opportunities*



- [Summer/Winter Schools](#)
- [Grants from the Government of Lithuania for studies abroad](#)
- Grants from International organisations/foundations (DAAD, CERN, BAAF, DBU, etc.)
- Staff mobility (Erasmus, NORDTEK, SGroup, etc.)



***More Opportunities***  
***[en.ktu.edu/erasmus/opportunities](https://en.ktu.edu/erasmus/opportunities)***

