

Welcome at Kiel University



Nadine Müller, M.A.
Susan Brode, M.A.
International Center
Erasmus Incoming Officer





Schleswig-Holstein ...

... 2.8 mio inhabitants on 15.799 km²

... biggest cities: Kiel and Lübeck

... Economy: more than 90% of companies are SMEs with less than 250 employees

... “Economic fields of competence”:

- Maritime Economy and Marine technologies
- Life Sciences (medicine, medical technology, biotechnology, pharmacy)
- Micro and Nanotechnology
- Food industry and technology
- Energy
- Tourism
- Information and Communication Technics (ICT)



Kiel – Sailing City ...

... is the capital of the “Land” Schleswig-Holstein

... has about 246,000 inhabitants

... is a green city with numerous parks and open spaces

... a lively city with a wide range of cultural attractions

... is the world capital of sailing and host of the »Kieler Woche« sailing event.



Facts & Figures

- Medium sized, research-focused university
- 8 Faculties
- 4 Research Foci
- 27.000 Students
- 3.500 employees
- 400 Professors
- 190 study programmes
- No.183 in the Shanghai Ranking (ARWU) 2017
- No. 221 in Times Higher Education Ranking (THE) 2017
- among the top 15 universities in Germany



Our faculties

- Faculty of Theology
- Faculty of Medicine
- Faculty of Arts and Humanities
- Faculty of Law
- Faculty of Business, Economics, and Social Sciences
- Faculty of Mathematics and Natural Sciences
- Faculty of Agriculture and Nutritional Sciences
- Faculty of Engineering



Research Foci and Excellence Projects



Kiel Marine Sciences

Marine Sciences, „Future Ocean“, Earth Systems, Climate and Coastal Zone Research, Economic and Social Consequences



Kiel Nano Sciences

Functional Nanosystems and Materials for Technological and Medical Applications



Societal, Environmental and Cultural Change

Interconnection of Mankind and Environment from Interdisciplinary Perspectives



Kiel Life Science

Interaction of Organism and Environment
Inflammation at Interfaces
Nutrition and Health

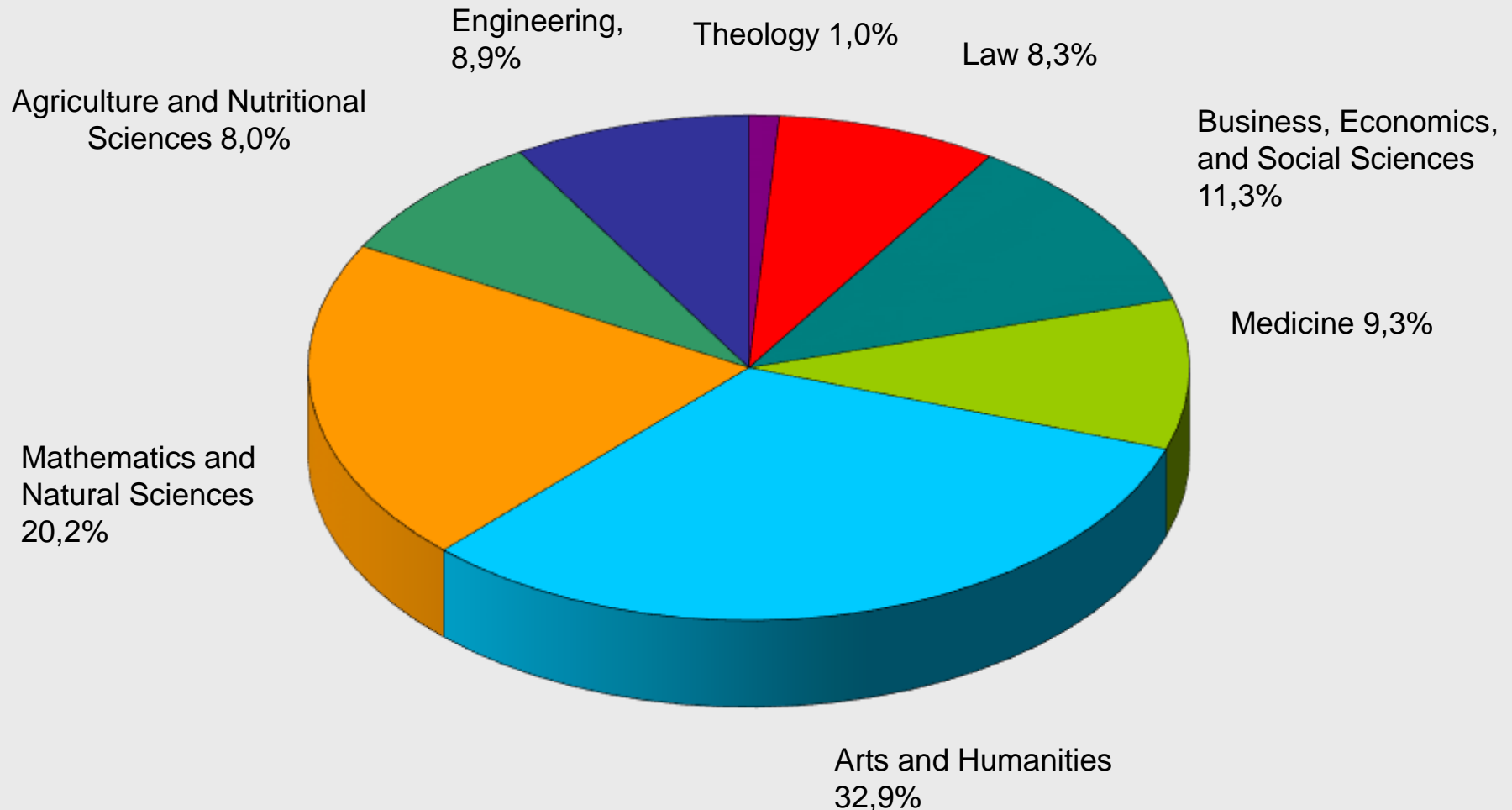


Institutions affiliated to the University

- Kiel Institute for World Economics
- German National Library of Economics (pictured)
- GEOMAR-Helmholtz-Centre for Ocean Research Kiel
- Leibniz Institute for Science Education (IPN)
- Stiftung Schleswig-Holsteinische Landesmuseen
Schloss Gottorf
- Lorenz-von-Stein-Institut für Verwaltungswissenschaften
- Institute for Security Studies
- Forschungs- und Technologiezentrum Westküste



Distribution of all students across the faculties



Global academic network

- University-wide partnership agreements with ~ 40 different universities worldwide
- 230 ERASMUS partner institutions in Europe with more than 475 bilateral agreements
- Key European links, concentrated around the Baltic Sea Region (Scandinavia and Eastern Europe)
- Key links with the USA
- Key links with China



Our international Master's programmes (1)



Business Administration / Economics:

- Economics
- Quantitative Economics
- Quantitative Finance
- Environmental and Resource Economics
- Mathematical Finance

Agriculture/Genomics:

- AgriGenomics

Engineering:

- Materials Science
- Digital Communications
- Electrical and Information Engineering
- Materials Science and Business Administration

Marine and Geosciences:

- Biological Oceanography
- Climate Physics: Meteorology and Physical Oceanography
- Marine Geosciences

Our international Master's programmes (2)



Environmental Studies:

- Environmental Management (also Double Degree with Univ. Irkutsk, RF and with Adam Mickiewicz Univ., Poland, 2017/18)
- Applied Ecology M.Sc. (ERASMUS Mundus project)
- Ecohydrology (ERASMUS Mundus project)
- Sustainability, Society and the Environment
- Environmental and Resource Economics

Life Science/Medicine:

- Molecular Biology and Evolution
- Medical Life Science
- Applied Scientific Dental/Medical Education & Research (tuition fee)
- Hospital Management
- Dairy Science

Language and Cultural Studies:

- English and American Literatures, Cultures, and Media
- Interkulturelle Studien: "Polen und Deutsche in Europa" (taught in German, Double Degree with Adam Mickiewicz University, Poland)

Law:

- LL.M. Programme (taught in German and English)

Our international doctoral programmes



- Quantitative Economics – International Doctoral Programme
- Integrated School of Ocean Sciences (ISOS)
(= integral part of the Excellence cluster “Future Ocean”)
- Human Development in Landscapes
(International Graduate School funded in the framework of the Federal “Excellence Initiative”)
- International Max Planck Research School (IMPRS) for Evolutionary Biology
(International Graduate School dedicated to highest level research and training in all areas of contemporary Evolutionary Biology)

Institute for Business Administration



Incomings

INCOMINGS

Hier finden Sie Informationen und Weiterleitungen zu Inhalten für Ihr Austauschstudium an der Christian-Albrechts-Universität zu Kiel

| Navigation | Incomings | Dokumente und QuickLinks |
|---|---|---|
| <ul style="list-style-type: none"> Aktuelles Internationale Studierende / Incomings Application as Exchange Student Studying in Kiel Living in Kiel Downloads and Links Studium im Ausland / Outgoings Anerkennung der Studienleistungen Partnerhochschulen ERASMUS+ Double Degree Bilaterale Kooperationen Outgoing als Freemover Praktika im Ausland Studying in Kiel Living in Kiel Stichwortverzeichnis Kontakt / Sprechzeiten | <p>European Region Action Scheme for the Mobility of University Students</p> <p>The first step towards your possible stay at the Kiel University is the successful application for abroad studies at your home university (which has to be a partner university of our institute!) the application process in Kiel begins. Herewith having received and checked of your documents, the replies will be send out. Once you have been approved for your abroad studies, you will receive all important information relating to topics like arrival, enrollment, accommodation, etc. Of course, a lot of these information can be found on this homepage as well.</p> | <ul style="list-style-type: none"> Fact Sheet for Incomings Study Information Package B.Sc. Modulhandbuch für Incomings (pdf) M.Sc. Modulhandbuch für Incomings (pdf) Univis Guide (pdf) Prüfungstermine für CAU Studenten - SoSe 2018 Prüfungstermine für CAU Studenten - WiSe 2018/19 Inhalte zum Transcript of Records (ToR) Bewerbungsfristen FAQ International Center Bewerbungsprozess (Int. Center) Europäische Kommission - ERASMUS+ Institut für Betriebswirtschaftslehre Univis (Vorlesungsverzeichnis) ZURÜCK ZUR STARTSEITE |

Course catalogue



➔ **Lecture Directory (updated in June and January)**

➔ **Study Programmes (Module handbooks)**

Course catalogue (Choice of courses)

➔ **Winter Semester**

➔ **Summer Semester**

➔ **Departmental Coordinator**

For questions please contact our [Erasmus Incoming Officer](#).

www.international.uni-kiel.de/en/course-catalogue/course-research



Tutors of the International Center

- Support during Enrolment and during Orientation week
- Organizing “Get to know each other” events
- Organizing city excursions (i.e. to Hamburg, Lübeck, Flensburg, Schleswig)
- Game nights and much more



Erasmus Student Network



esnkiel

Abonnieren

52 Beiträge

525 Abonnenten

124 abonniert

ESN Kiel

ERASMUS Student Network Kiel

Kiel, Germany

Set Sail!

www.esn.org/survey2021



Takeover



🎁🎁🎁



SEA-EU Tak...



Welcome!



Jochen



#WordTime...



NA Munich...

BEITRÄGE

MARKIERT

Health & Wellbeing

Running helps to stay energetic and feel balanced on a rough day. Yet don't forget to treat yourself every now and then. *Janne*



Pnio



Health & Wellbeing

For me, clearing my head and relaxing are fundamental for wellbeing. My easiest way to do that is going for a walk. *Paula*



ESN Kiel
Candidate Section

 KISO
Kiel International Student Organization

Karaoke Night

Nov 21 8 pm International Center

WELCOME WEEK

- Monday **PICKNICK**
- BOWLING** Tuesday
- Wednesday **LASERTAG**
- CAFE CRAWL** Thursday
- Friday **CITY RACE**

SPREE BREAK

8 - 10 NOV // BERLIN

Language Courses

Department for German as a Foreign Language



... ~ 500 participants from more than 70 nationalities
(regular courses: ~ 300, summer courses and special courses:
~200 participants)

... Preparatory courses (for DSH) at different levels
(~20 hours per week)

... “ERASMUS courses”
7 levels, 6 hours per week, 2-3 evenings

... International Summer Courses in July and
September



International Summer Course

„Deutschland heute“ – language, society, government, culture“

... Mid July – Mid August

... 70 to 90 students and graduates from nearly 20 different countries

- Intermediate and advanced German Classes at 6 different levels (in total 90 instruction hours)
- Lectures to give participants insights into the politics, economy and culture of today's Germany
- Excursions to discover the region (e.g. Hamburg, Lübeck)
- Supplementary programme by various leisure activities

... Course fee: Euro 980,- including all programme costs, accommodation and lodging (half-board).



Prep course

„German for university studies“

... 4 weeks in September

... ~30 participants

- Basic and intermediate courses with 3 levels of proficiency
- Level 1: for beginners without any previous knowledge
- 18-20 hours of class per week
- Regional Excursions and leisure activities

... Course fee: Euro 580,-
including all programme costs, excursions and teaching materials (no accommodation).



The following museums and collections in Kiel belong to the CAU:

- the »Kunsthalle Kiel« art gallery
- the Museum of Ethnology
- the Zoological Museum
- the Geological and Mineralogical Museum
- the Aquarium at the Leibniz Institute of Marine Sciences at Kiel University
- the Botanical Garden
- the Historical Museum of Theater and Hebbel Collection
- the Historical Museum of Medicine and Pharmacy
- the Anatomical Museum





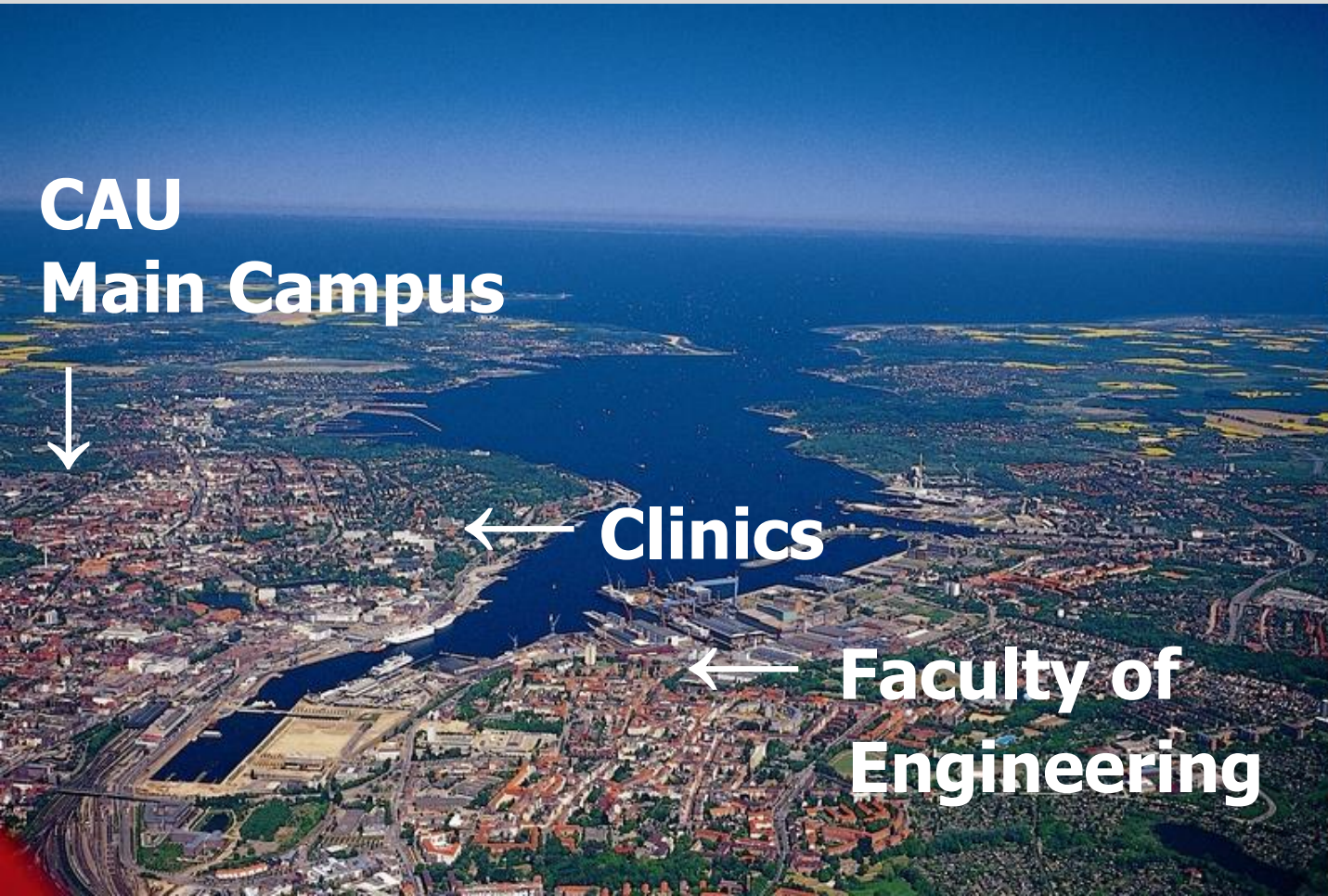
**CAU
Main Campus**



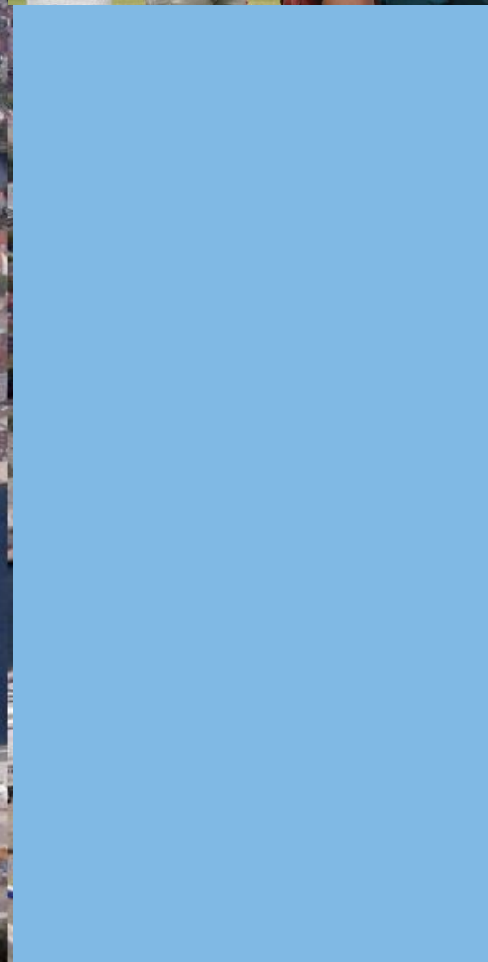
Clinics



**Faculty of
Engineering**



The cruise ship harbour of Kiel



City hall and opera house



The harbour at night



The seaside



Kiel`s beaches





Kiellinie mit HDW- Blick



Kieler Woche Impression

From Kiel to the World

Even in its 138th year, Kieler Woche still plays a virtuoso performance on the keyboard of festivity: Kieler Woche is the largest summer festival in Northern Europe.

From 22 to 30 June, more than three million visitors from all over the world will be diving into the colourful and multi-faceted life of Kieler Woche.

Around 2.000 events in areas of culture, sailing, summer festival, entertainment, science, politics, industry and sport come together to form a maritime symphony. Visitors are promised nine days of high spirits in the far North.

[THE EVENT CALENDAR](#)



World's biggest **Sailing Event**



KIELER WOCHE SPECIALS

[→ 12 Reasons to Love Kiel Week](#)

[→ Service & FAQ for Sailors](#)

Thank you very much
for your attention!