

# FACULTY OF MANAGEMENT

## PRAGUE UNIVERSITY OF ECONOMICS AND BUSINESS



# GENERAL INFORMATION

- **The Faculty offers bachelor's, master's and doctoral degree in management**
  - full time and combined forms
  - the modular form of study
- **The Faculty has a fully equipped and newly renovated facility**
  - the main building, library and information centre, dorm complex and canteen
  - modernization from EU funds – OP Research and Development for Innovation
- **The faculty offers its students**
  - the environment of the largest and oldest Czech economics and management universities
  - quality education at all three levels of university studies
  - tailoring studies according to individual student needs
  - extensive possibilities for studying abroad
  - the high rate of graduates working in the field
  - new Library and Information Centre and renovated dorms
  - study in a homelike and friendly atmosphere in Jindřichův Hradec with a rich cultural and social life



# DORMITORY AND CANTEEN

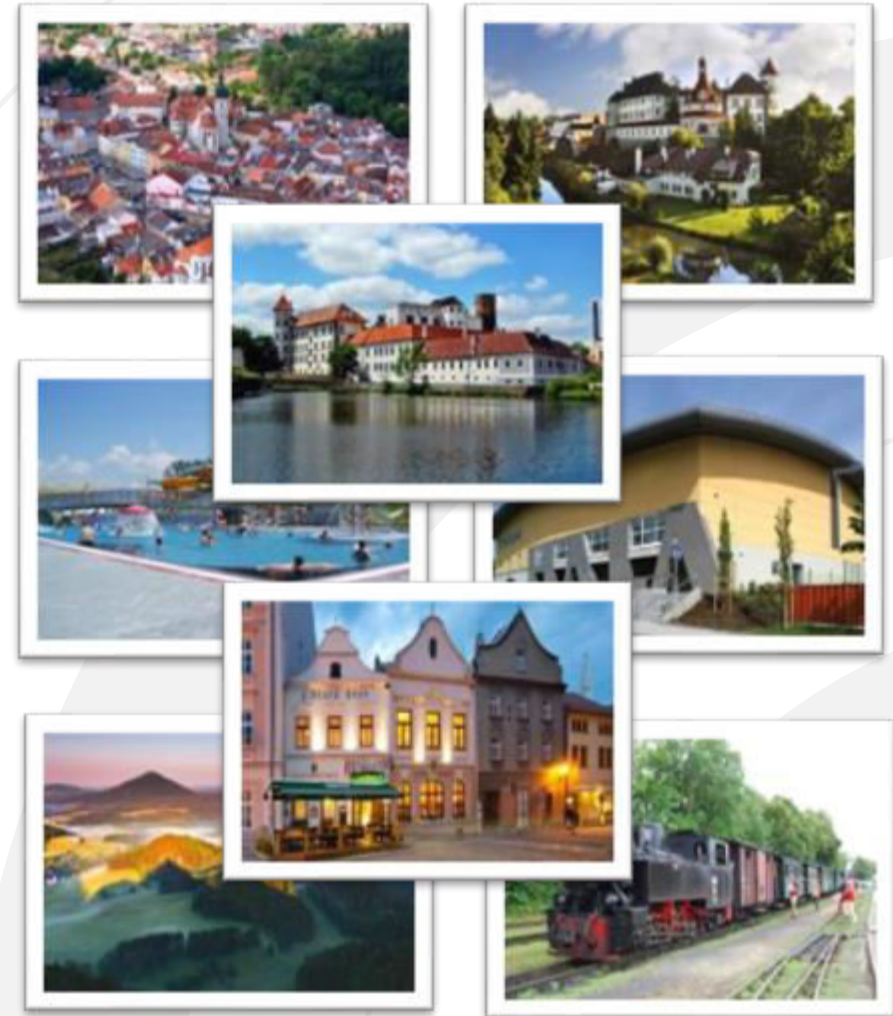
- **A 10-minute walk from the faculty building**
  - quiet part of the city centre
  - all civic amenities in the vicinity
- **Sufficient capacity in dormitories: 343 beds**
  - cellular type of accommodation
- **Possibilities for sporting and social activities**
- **Possibility to park directly in front of the dormitory**
- **Canteen is located at the faculty**





# JINDŘICHŮV HRADEC

- **Picturesque South Bohemian town with approximately 22,000 residents**
- The economic, administrative and cultural centre of the region
- Good accessibility by car, bus or train
- Quiet and very safe city
- Well-preserved and popular historical centre
- Healthy and beautiful scenery around the town (Czech Canada)
  
- **Sports and social facilities in the city**
  - sports stadium, sports hall, athletics stadium, swimming pool
  - fitness centres, sports centres
  - a dense network of bike and hiking trails
  - cinema, theatre
  - museums and galleries
  - major cultural events throughout the year
  
- **Facilities for student life**
  - dozens of pubs and bars
  - two discos



# COURSES FOR EXCHANGE STUDENTS

- **The exchange students can choose from many courses taught in English**
- The courses cover topics from various spheres of management and marketing:
  - Basics of Management/Marketing
  - Sustainable Development Management
  - Strategic Management/Marketing
  - Marketing in Healthcare
  - Sports Management
  - Economics and Economic Policy
  - International Management/Marketing
  - Marketing simulation
  - Marketing Communication and Consumer Culture
  - Branding
- Students can find a full list of courses for exchange program here: <https://www.fm.vse.cz/english/international-students/>
- The courses are suitable for both bachelor's students and master's students as well and the offer depends on the semester of study

# BUDDY PROGRAM

- Each of the Faculties of Prague University of Economics and Business has Buddies for students who arrive for an exchange program
- **Buddy from the Faculty of Management will**
  - pick you up at the airport
  - show you around the city and the faculty
  - introduce you to your new colleagues
  - help you and advise you anytime you need to
- **With your Buddy, you can**
  - study
  - travel
  - party
  - just have fun...



# SOCIAL LIFE

- **The Faculty of Management has several student organizations and clubs:**
  - theatre group FAMA
  - the first Czech university sorority Alfa Fí
  - Events4Students
  - Sporták FM (held by the University Sports Club)
  - volunteer programme 5P
  - student band
- You can visit various social and cultural events every month





# UNIVERSITY SPORTS CLUB

- **University sports club organizes sports activities for students and faculty staff**
  - offers nearly two dozen sports activities throughout the week during the semester
    - i.e. aerobics, spinning, fit boxing, TRX, swimming, climbing, hockey, table tennis, basketball and many more
- **Organizes or co-organizes individual sporting events**
  - Christmas swimming relay, Hradec Jogging Hour, Skiing with the Faculty of Management, hockey and volleyball matches, Rector's Sports Day
- **The annual membership fee is only CZK 500 (= 20 EUR = 24 USD) for students**





# MAIN ADVANTAGES FOR EXCHANGE STUDENTS

## • Faculty of Management

- Part of high-prestige Prague University of Economics and Business
- Holder of the ECTS Label
- Attractive list of courses for exchange students
- Recently renovated campus
- Excellent equipment for study and students' life
- Small faculty with an individual approach to students
- Friendly atmosphere
- Helpful staff

## • Jindřichův Hradec

- The fully-equipped administrative centre of the region
- Wide choice of free-time activities for students
- Convenient transportation to the city
- High-quality tourism destination
- Gate to Czech Canada Natural Park
- Friendly and safe city
- Low-living costs
- The best city for living in the Czech Republic (2011)



# CONTACT INFORMATION

## Faculty of Management

1117 Jarošovská Str., Jindřichův Hradec, Czech Republic

☎ 00420 384 417 277

✉ [exchange@fm.vse.cz](mailto:exchange@fm.vse.cz)

🏠 <http://www.fm.vse.cz>

facebook



## Martin Luštický

Vice-Dean for Development and External Relations

✉ [martin.lusticky@vse.cz](mailto:martin.lusticky@vse.cz)

## Daria Gunina

International Exchange Coordinator

✉ [daria.gunina@vse.cz](mailto:daria.gunina@vse.cz)



# VIDEO





**WE LOOK FORWARD TO  
SEEING YOU IN HRADEC!**

