



INSIGHTS INTO

TECHNISCHE HOCHSCHULE LÜBECK

University of Applied Sciences

# WELCOME TO THE CAMPUS OF TH LÜBECK



## Facts

50th anniversary in 2019

- almost 5.000 students
- 1.100 registrations per year
- 130 professors
- 320 employees
- external funding for applied research projects, cooperation with industries: €10 million p.a.
- nearly 95% of bachelor and master theses in cooperation with industries and engineering companies





## CAMPUS MAP TECHNISCHE HOCHSCHULE LÜBECK (THL)

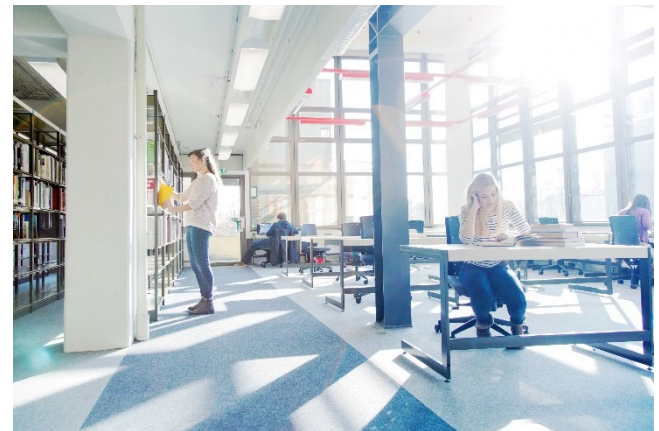


Building No.

- 1 Atrium: EI, MW
- 2 Auditorium building, Secretariat EI, Secretariat MW
- 3, 3a Material Testing Institute (MPA)
- 4 Electrical engineering/material testing
- 5 Machine hall/workshop
- 6 Boiler house/fluid mechanics
- 7 Caretaker's house
- 8 Storage
- 9 Lecture rooms
- 10 Lecture rooms
- 11 Laboratory building: physical technology AN,
- 13 Laboratory building AN, Secretariat AN, Center industrial biotechnology (CIB)
- 14 Laboratory building B, lecture rooms B, Secretariat B
- 15 Laboratory building: B
- 15B AStA, Students councils, StuPa
- 16 Company medical officer
- 17 Laboratory building AN, MW
- 18 Laboratory building EI, CoSA Center of Excellence (Communications-System-Applications)
- 19 High voltage laboratory/EMV
- 19A Distribution station
- 20 Solar house
- 20A Modular building
- 21 Laboratory building: AN, EI, MW, Kompetenz- und Wissenschaftszentrum für intelligente Energienutzung (WiE),
- 24 JuniorCampus
- 25 Auditorium building
- 36 Entrance A: ServicePoint, University board, Printing Office, administration  
Entr. B: THL Forschungs-GmbH, THL Projekt-GmbH  
Entr. C: STUDENT SERVICE CENTER (SSC)  
Admission Office, International Office, Language Center
- 64 Laboratory building: Biomedical engineering AN, TANDEM Center of Excellence - Technology and Engineering in Medicine
- 65 Audimax
- GC 1,2 GründerCube
- MFC 1 LINKplus
- MFC 7 oncampus GmbH, Institut für Lerndienstleistungen (ILD)
- MFC 8 Storage

## What do we do?

- study, teaching and research
- know-how and technology transfer
- scientific training and further education
- studying in small groups
- encouraging entrepreneurship



## Bachelor and Master Courses

<b>Total</b>	<b>20 Bachelor degree courses</b>	<b>13 Master degree courses</b>
Online courses	3 Bachelor	2 Master
International courses in English		3 Master
International courses in direct cooperation with partner universities	2 double degree courses with MSOE 3 double degree *	

\*) only for students of East China University of Science and Technology and Zhejiang University of Science and Technology

## One University – Four Departments

- Department of Applied Natural Sciences
- Department of Architecture and Civil Engineering
- Department of Electrical Engineering and Computer Science
- Department of Mechanical Engineering and Business Administration





# DEPARTMENT OF APPLIED NATURAL SCIENCES



## Department of Applied Natural Sciences

Solutions for technical and applied problems based on scientific methods – professional education for engineers with a broad scientific background.

Focus:

- Health Science, Biomedical Engineering
- Industrial Biochemistry and Chemistry
- Environmental Engineering
- Physical Engineering

## Courses & Study Programs


- Applied Chemistry, B.Sc. (German)
- Biomedical Engineering, B.Sc. (German)
- Environmental Engineering and - Management, B.Sc. (German)
- Environmental Engineering, B.Sc. (ECUST)
- Audiological Acoustics, B.Sc. (German)
- Physical Technology, B.Sc. (German)
- Technical Biochemistry, M.Sc. (German)
- Regulatory Affairs, M.Sc. (German)
- Biomedical Engineering, M.Sc. (English)



## International Courses

- Biomedical Engineering (M.Sc.)  
in cooperation with Universität zu Lübeck
- Environmental Engineering (B.Sc.)  
double degree with ECUST (East China  
University of Science and Technology,  
China)





**DEPARTMENT OF**  
ARCHITECTURE AND  
CIVIL ENGINEERING

# Department of Architecture and Civil Engineering

Interdisciplinary, project oriented cooperation between architects, engineers and urban planners, strong regional network.

Focus:

- improvement of existing infrastructure
- architecture for the health sector
- smart cities and urban structures
- civil engineering for the water sector

## Courses & Study Programs

- Architecture, B.A. and M.A.
- Civil Engineering, B. Eng. and M.Eng
- Urban Design, M.A.
- Energy Design and Technology B.Eng.



## International Courses and Networks

- Sino-German Institute for Applied Engineering, CDAI Exchange program with ZUST (Zhejiang University of Science and Technology), Hangzhou, China
- Water Engineering, M.Sc. In English
- Exchange with Ukrainian universities
- Baltic Sea Workshops



# Department of Architecture and Civil Engineering

## Laboratories:

- Digital construction laboratory
- Laboratory for Acoustics
- Laboratory for building materials
- Laboratory for Experimental Planning and Building, Model Making
- Geotechnical Laboratory
- Laboratory for Hydrology and International Water Management
- Laboratory for Urban Water Management and Waste Technology
- Transport Infrastructures Laboratory
- Hydraulic engineering laboratory
- Expert group urban planning and urban development
- Specialist group for water management and hydraulic engineering
- Institute for Applied Building Research





**DEPARTMENT OF**  
ELECTRICAL ENGINEERING &  
COMPUTER SCIENCE

# Department of Electrical Engineering & Computer Science

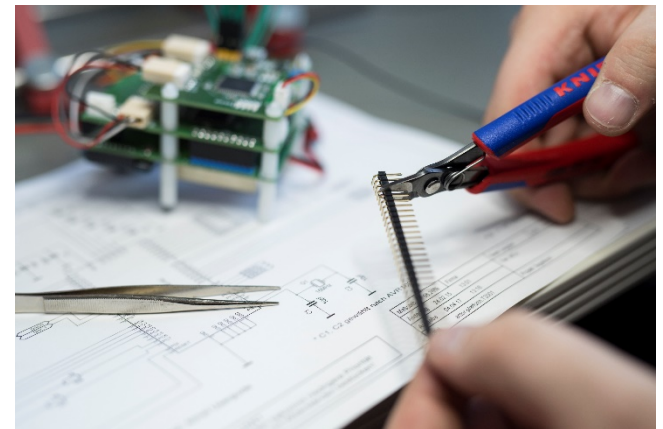
This department is the only one in Germany that provides students with an international double degree in electrical engineering + it offers double degrees with the United States of America and China.

It trains broadly based engineers and excels in application-oriented research and transfer services. The department is home to the Competence Center CoSA (Communication, Systems, Applications) that deals with future topics such as digitization, renewable energies and medical technology. The department focusses on:

- Electrical Engineering
- Computer Science
- Design & Usability
- Online Teaching

## Courses & Study Programs

- Electrical Engineering - Energy Systems and Automation Engineering, B.Sc. (incl. dual studies Electrical Engineering)
- Electrical Engineering – Communications systems, B.Sc. (incl. dual studies Electrical Engineering)
- Information Technology & Design, B.Sc.
- Computer Science/ Software Engineering, B.Sc.
- Computer Science and Media Applications - online studies, B.Sc. /M.Sc.
- Renewable Energies Online, B.Sc



## International Courses

- International Studies Electrical Engineering  
MSOE (Milwaukee School of Engineering),  
USA
- Information Technology  
ECUST (East China University of Science and  
Technology), China
- Applied Information Technology M.Sc.





**DEPARTMENT OF**  
**MECHANICAL ENGINEERING &**  
**BUSINESS ADMINISTRATION**

## Dept. of Mechanical Engineering & Business Administration

The largest department offers double degree programs with the USA and impresses with its innovative and broad range of studies and transfers, based on the fusion of technology and business. It focuses on:

- *Mechanical Engineering*
- *International Economy*
- *Health Management*
- *Logistics*
- *Entrepreneurship & Foundation* in form of the Institute for Entrepreneurship and Business Development.

Study courses, like Business Administration and Engineering - Food Industry, B.Eng are the direct result of the close cooperation with the local economy and industry.

## Courses & Study Programs

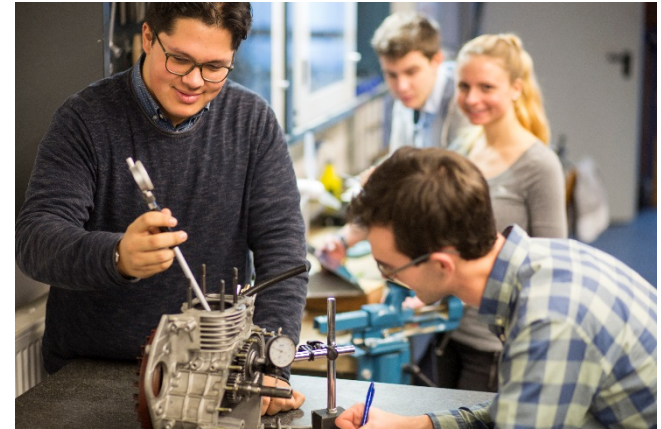
- Business Administration B.Sc. /M.A.
- Business Administration and Engineering, B.Sc. & M.Sc.
- Business Administration and Engineering (online) B.Eng.
- Mechanical Engineering B.Sc. (incl. dual studies Mechanical Engineering)
- Mechanical Engineering M.Sc. (English)
- Business Administration and Engineering - Food Industry, B.Eng.



# International Courses

## Double Degree Courses:

- Business Administration, Business Administration and Engineering, B.Sc., in cooperation with Milwaukee School of Engineering (MSOE), Milwaukee, USA
- Mechanical Engineering, B.Sc., in cooperation with Milwaukee School of Engineering (MSOE), Milwaukee, USA
- Mechanical Engineering, M.Sc. in cooperation with European Universities







STUDENT LIFE

# Academic Calendar

## Fall semester

Welcome Week: 23. – 24.09.2021

Lecture period: 27.09.2021 – 22.01.2022

Examination period: 22.01.2022 – 01.02.2022

Christmas break: 23.12.2021 – 02.01.2022

German language course before semester

## Spring semester

Welcome session: 16. - 17.03.2022

Lecture period: 21.03.2022 – 01.07.2022

Examination period: 02.07.2022 – 12.07.2022



## Application documents for exchange students

- Application form
- Transcript of Records
- Learning Agreement
- Proof of language skills, if applicable
- Copy of ID

Deadlines: 15 June and 15 December

## Accommodation

- Residence halls run by Studentenwerk
  - Rent range from 212 to 407 € / month
- Private residence halls
- Shared apartments



## Cost of Living

Total living costs in Lübeck per month: approx. 800 - 900 €

Semester administrative fee: 266.50 €

(includes transit pass for local public transportation valid for one semester – fee is subject to change)

## Health Insurance

European students have to bring the European Health Insurance Card

## Service offered by TH Lübeck

- Student Buddy Program
- University sports
- Career Development
- Excursions and intercultural activities
- Language Center





**THE CITY OF LÜBECK**

**QUEEN OF THE HANSEATIC LEAGUE**

## Facts about Lübeck

- Located in the north of Germany, at the Baltic Sea
- UNESCO world heritage site
- Combines culture, history and marine life
- City of Nobel Prize Winners
- Closest airport: Hamburg
- 220,000 inhabitants and 9,000 students at 3 universities





## Contact

Technische Hochschule Lübeck  
Mönkhofer Weg 239  
23562 Lübeck

International Office

[international@th-luebeck.de](mailto:international@th-luebeck.de)

Phone: +49 451 300 5703



# SEE YOU IN LÜBECK SOON!



**THANK YOU**  
FOR YOUR ATTENTION